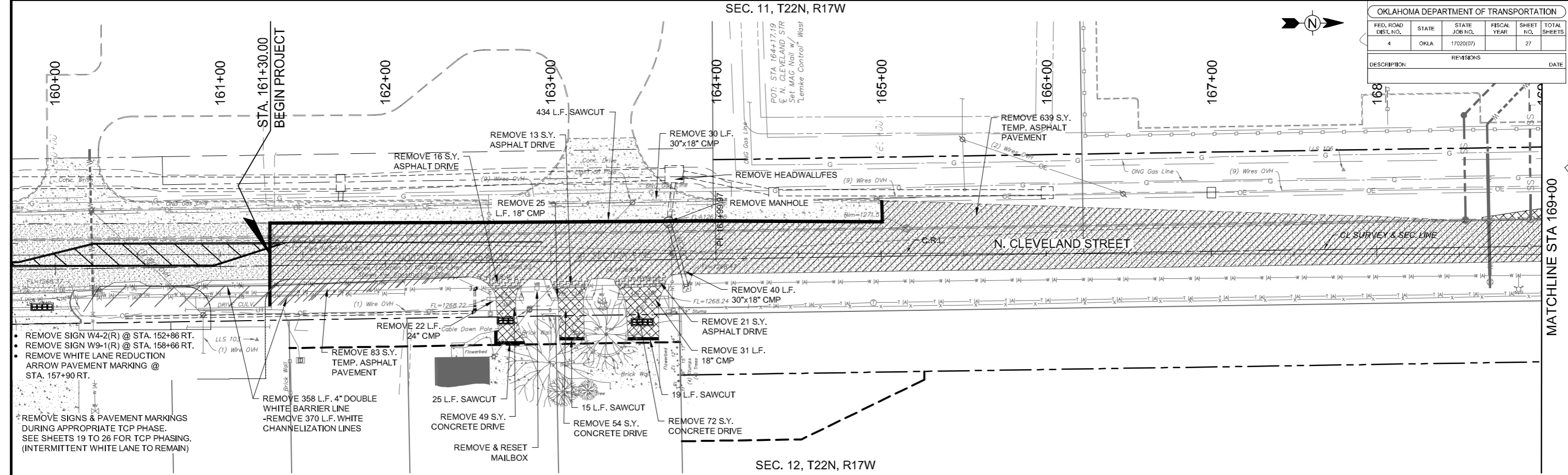


SEC. 11, T22N, R17W

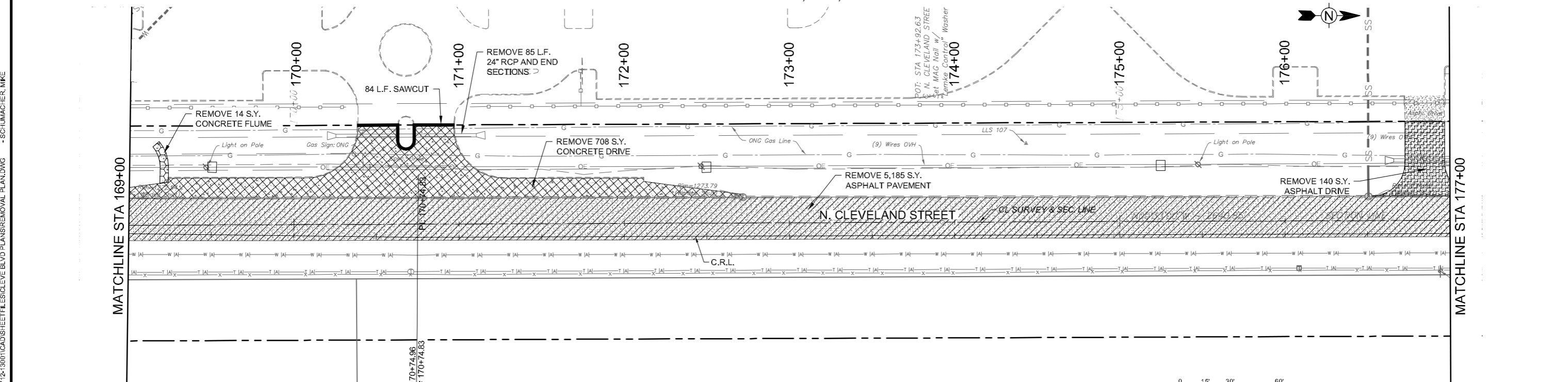
OKLAHOMA DEPARTMENT OF TRANSPORTATION					
FED. ROAD DIST. NO.	STATE	STATE JOB NO.	FISCAL YEAR	SHEET NO.	TOTAL SHEETS
4	OKLA	17020(07)		27	
DESCRIPTION			REVISIONS	DATE	



- REMOVE SIGN W4-2(R) @ STA. 152+86 RT.
- REMOVE SIGN W9-1(R) @ STA. 158+66 RT.
- REMOVE WHITE LANE REDUCTION ARROW PAVEMENT MARKING @ STA. 157+90 RT.
- REMOVE SIGNS & PAVEMENT MARKINGS DURING APPROPRIATE TCP PHASE. SEE SHEETS 19 TO 26 FOR TCP PHASING. (INTERMITTENT WHITE LANE TO REMAIN)

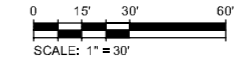
SEC. 12, T22N, R17W

SEC. 11, T22N, R17W



REMOVAL LEGEND

	ASPHALT PAVEMENT = 5,185 S.Y.
	CONCRETE DRIVE = 883 S.Y.
	ASPHALT DRIVE = 190 S.Y.
	GRAVEL DRIVE = 0 S.Y.
	SAWCUT = 850 L.F.
	CONCRETE PAVEMENT = 185 S.Y.



DESIGN	MVS
DRAWN	CWT
CHECKED	JDH
APPROVED	JDH
SQUAD	Tt

OKLAHOMA DEPARTMENT OF TRANSPORTATION

REMOVAL PLAN

STA. 161+30 TO STA. 177+00

STATE JOB NO. 17020(07) SHEET NO. 27

CITY PROJECT R-1311B GARFIELD COUNTY

4/21/2017 6:24:57 PM - P:\2771\21\31\2771-2\300\CAD\SHEETFILES\CLEVELAND BLVD PLANS\REMOVAL PLAN.DWG - SCHUMACHER, MIKE